

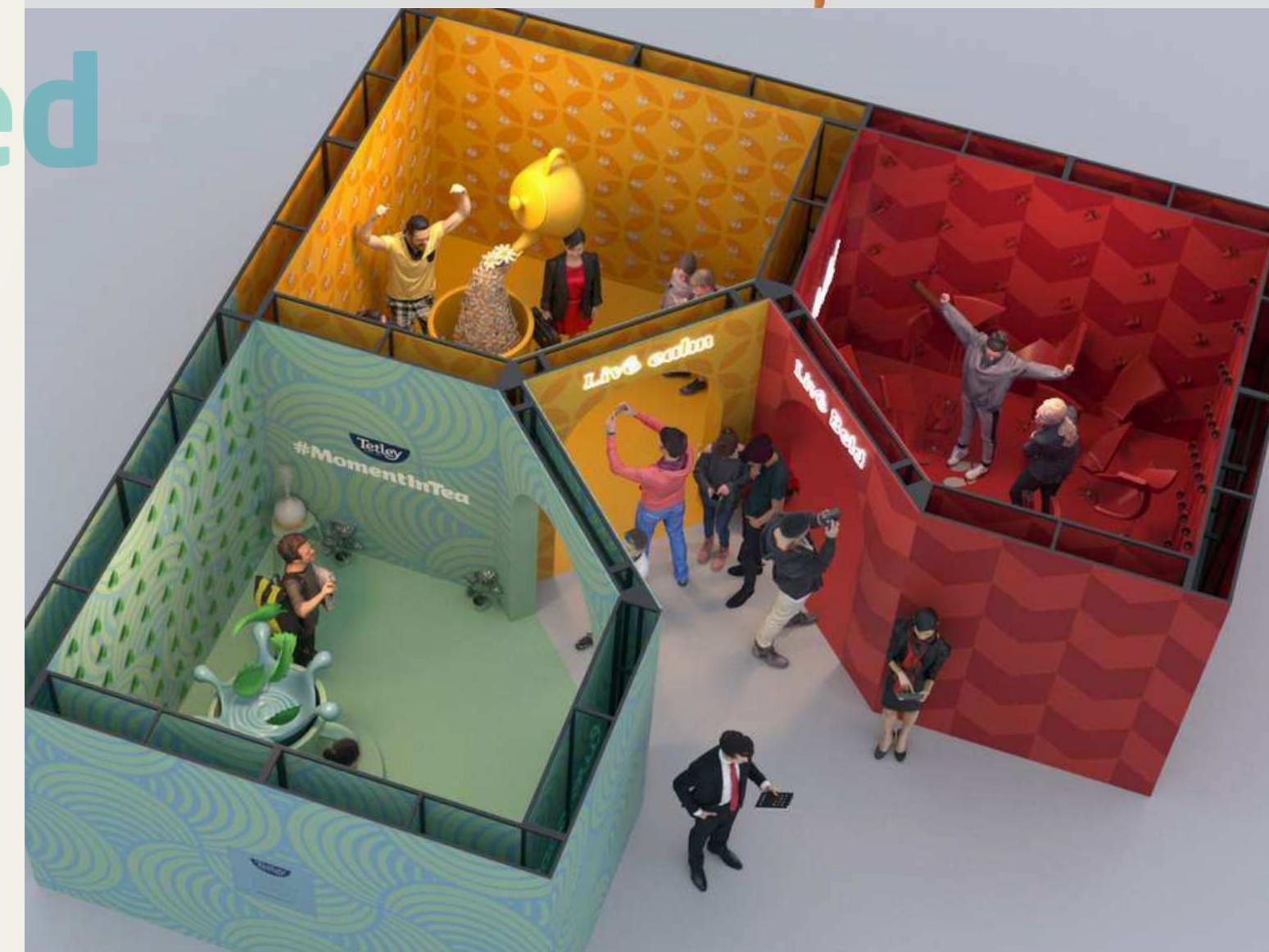
WE MAKE YOUR BRAND STAND OUT

Concepts and Designs

At Custom Engineered Arts, we turn ideas into reality with advanced **3D modeling and visualization**.

Our designers stay ahead of **industry trends**, creating **concepts** that are both **stylish and functional**. Once approved, our team produces detailed 3D renderings, with engineers calculating dimensions and weights for perfect execution.

From concept to completion, we ensure precision and quality every step of the way.



Shop Tools

Precision & Efficiency in Fabrication

Shop tools are essential for **manufacturing, fabrication, woodworking, and metalworking**, enabling precise cutting, shaping, assembly, and finishing.

Cutting Tools

CNC routers, laser cutters, saws, foam cutting machines

Machining Tools

Lathes, mills, 5-axis CNC machines

3D Printing

FDM & resin printers for prototyping and production

Robotic Systems

KUKA robots 7-axis for automated cutting & sculpting

Hand & Power Tools

Drills, grinders, sanders, MIG and TIG welding equipment

Measurement Tools

Calipers, micrometers, laser scanners for precision

CRAFTEX
CX-SERIES

Custom
Engineered
Arts

CNC Machines

4-axis hot wire CNC machine

- Cuts EPS foam (expanded polystyrene);
- 4 independent axes enable tapered and intricate cuts;
- Ideal for props, packaging, aerospace, and architecture.



CNC Machines

5-Axis CNC Machine

- Cuts metal, wood, plastic, and rigid materials;
- X, Y, Z, A, B axes allow multi-directional movement;
- Performs complex 3D shaping, undercuts, and high-precision machining;
- Used in aerospace, automotive, medical, and high-end manufacturing.

Key Difference

4-axis foam cutters specialize in **soft material shaping**, while **5-axis** CNC machines excel at **complex, multi-angle machining on rigid materials**.

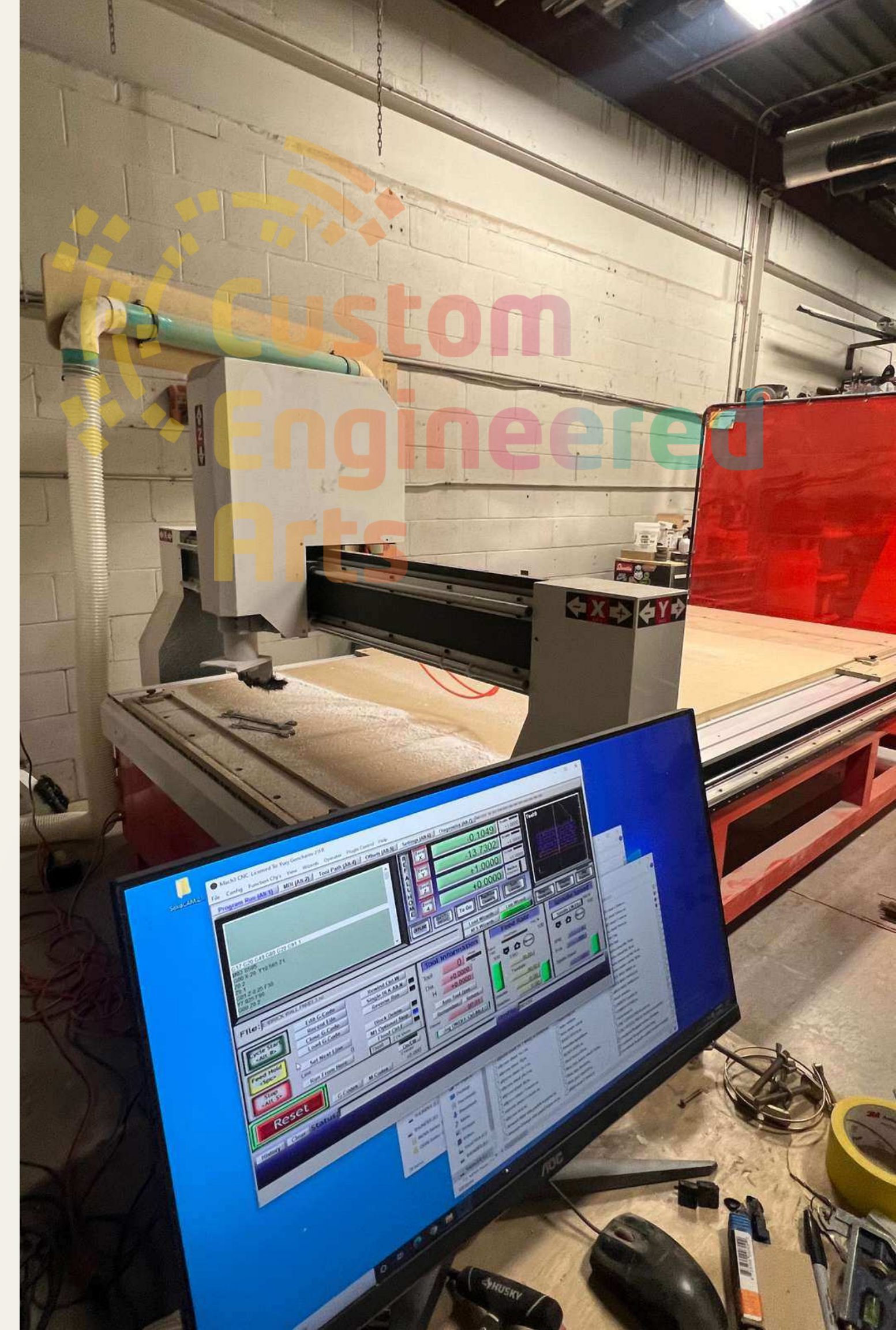


3-Axis CNC Router (5x10')

The 3-Axis CNC Router (5x10') is a **high-precision machining system** designed for **large-format cutting and engraving** across various materials.

Key Features

- ✓ **Work Area:** 5x10 feet, ideal for full-sheet processing.
- ✓ **Material Compatibility:** Wood, MDF, acrylic, foam, aluminum, and composites;
- ✓ **Precision & Efficiency:** Automated cutting for consistent, high-speed production;
- ✓ **Versatile Applications:** Furniture, signage, architectural elements, and prototyping.



KUKA Robot Foam CNC Machine

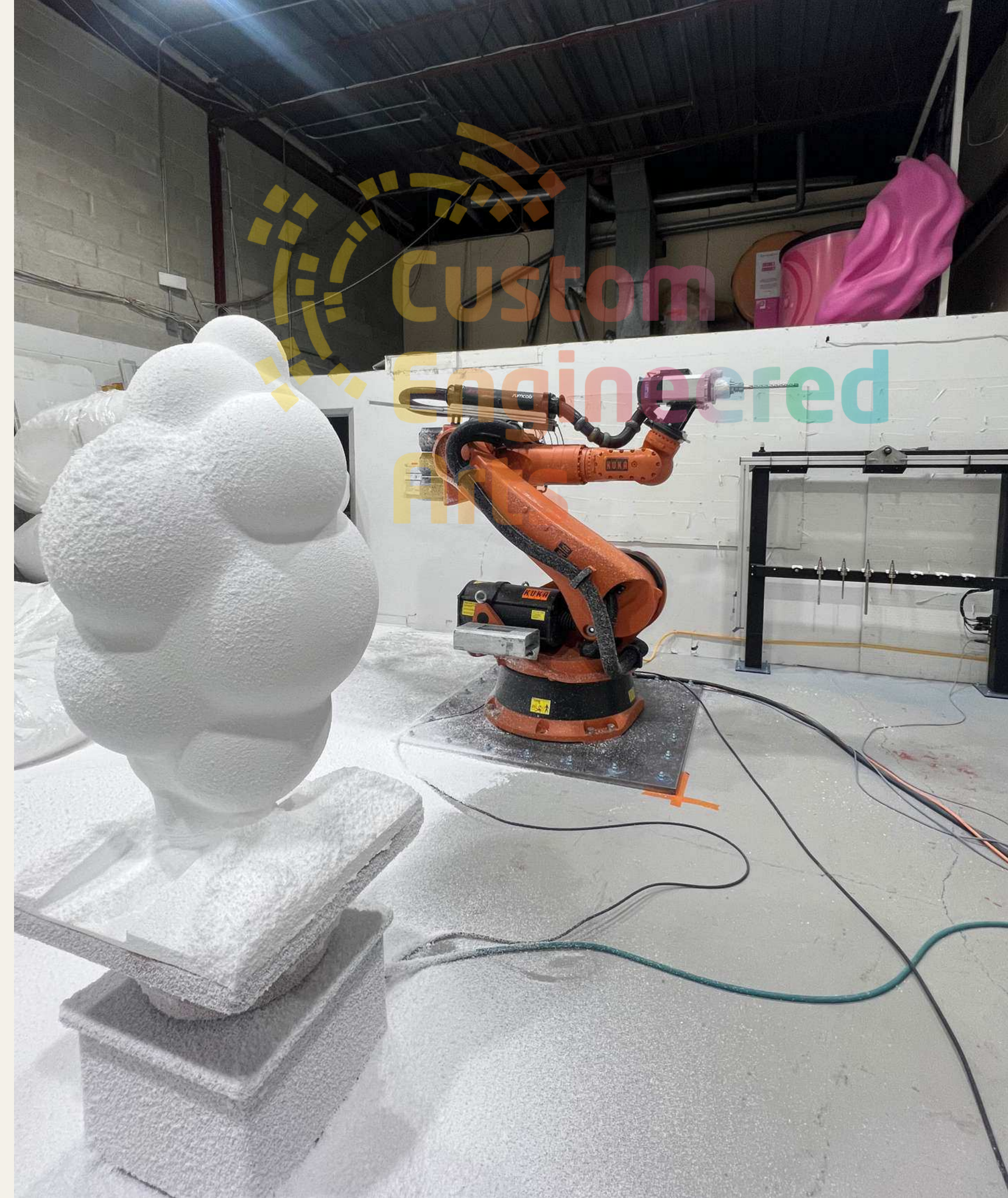
- **7-axis robotic CNC system** for precise foam cutting & sculpting;
- Equipped with a KUKA industrial robot using a **spindle and hot wire**;
- Enables complex **3D carving & undercuts**.

Key Features

- ✓ **High Precision & Flexibility**
- ✓ **Large Work Envelope**
- ✓ **Multi-Tool Compatibility**
- ✓ **Automation & Efficiency**

Applications

- **Thematic & Set Design**
Theme parks, movie props;
- **Aerospace & Automotive**
Prototyping & modeling;
- **Architecture & Art**
Sculptures & installations;
- **Custom Packaging & Molds.**



3D Printers

Modex Meter FDM Printer

The Modex Meter FDM Printer delivers **high-precision, industrial-scale 3D printing**, ideal for large, strong, and functional prototypes or end-use parts.

Applications

- **Prototyping & Manufacturing**
Large functional parts & tooling;
- **Aerospace & Automotive**
Lightweight structural components;
- **Architecture & Art**
Custom furniture & decorative elements;
- **Education & Research**
Large-scale engineering models.

Key Features

- ✓ **Large Build Volume**
Prints objects **up to 1 meter+ in size**;
- ✓ **High-Speed Printing**;
- ✓ **Multi-Material Compatibility**
Supports **PLA, ABS, PETG**, and composites.



3D Printers

Anycubic Photon M3 Max 3D Printer

This **large-format resin printer** combines **exceptional detail**, **smart automation**, and a **spacious build area**, making it ideal for **high-quality, large-scale resin printing**.



Key Features

- ✓ **Large Build Volume**
300 x 298 x 164 mm, ideal for big models;
- ✓ **7K Monochrome LCD**
- ✓ **Auto Resin Feeding System**
Ensures a consistent material supply;
- ✓ **Powerful Light Source**
Provides uniform exposure for sharp prints;
- ✓ **Stable Dual Linear Rails**
Enhances Z-axis stability & reduces layer shifts.

Applications

- **Miniatures & Figurines** – High-detail tabletop models;
- **Prototyping** – Precise parts for engineering & product development;
- **Art & Custom Creations** – Smooth & intricate sculptures.



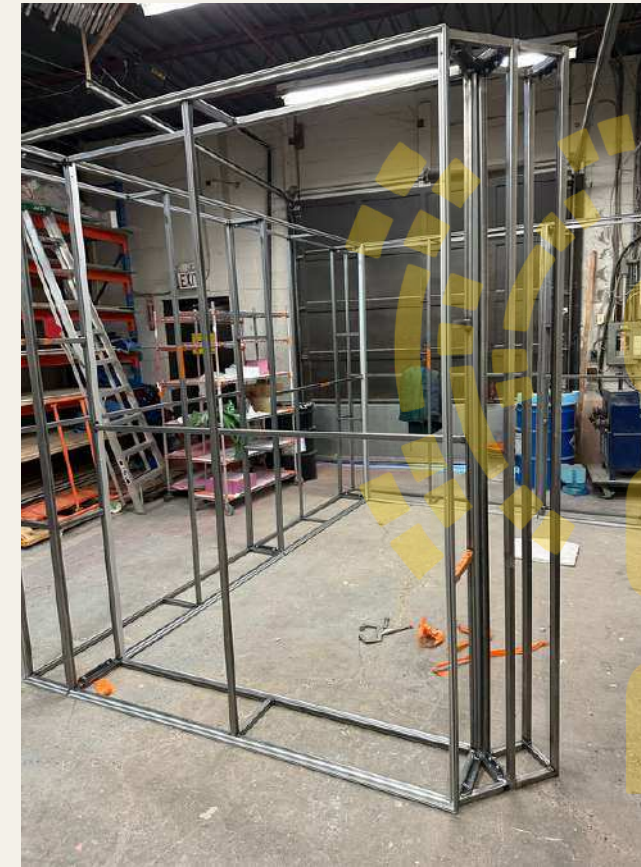
Hard coating

We apply **polyurea** as a **durable hard coat** for **EPS foam objects**, providing **exceptional resistance to temperature changes, abrasion, impact, and corrosion**. Its versatility makes it ideal for **harsh environments**. Available in **two finishes: smooth and textured (orange peel)**.



Fiberglass

Fiberglass is our **go-to material** for projects requiring a **thin, durable layer and accommodating complex shapes** or intricate topography.



Metalwork

We utilize advanced machinery to create **metal objects**, whether as standalone pieces or **components of larger structures**. Our **MIG and TIG welding machines** enable high-precision metal welding, while our fully equipped shop allows us to handle most metalwork in-house. Key equipment includes a **pipe bending machine, bandsaw, guillotine, drill press, and low-profile stock bender**.

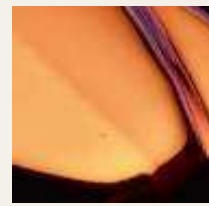
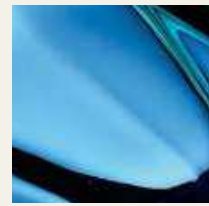
Painting

Our products stand out with **vibrant, high-quality finishes**. We use **water-based, solvent-based, and 2K paints**, ensuring durability and precision. Painting takes place in our **two filtered spray booths**, providing a **controlled and safe environment**. The **large booth** measures **26 x 13 x 10 ft**, while the **small booth** is **8 x 9 x 8 ft**, both designed for **high-precision spray painting and coating applications**.



Spray Chrome Paint

Our **spray chrome paint** delivers a **sleek metallic finish** on materials like **wood, plaster, urethane, and foam**. Being **water-based**, it is **free from harmful chemicals** and available in a **variety of colors**, including **gold, bronze, and a full spectrum of rainbow shades**. Ideal for adding a **touch of luxury** to any project.



Soljet Pro 3

Industrial Precision Wide Format Printing

The **Soljet Pro 3** is a cutting-edge **digital printing system** designed for **high-volume, high-precision production** in industrial settings. It delivers **exceptional color accuracy** and **sharp detail**, meeting the demands of modern print applications.

Key Features

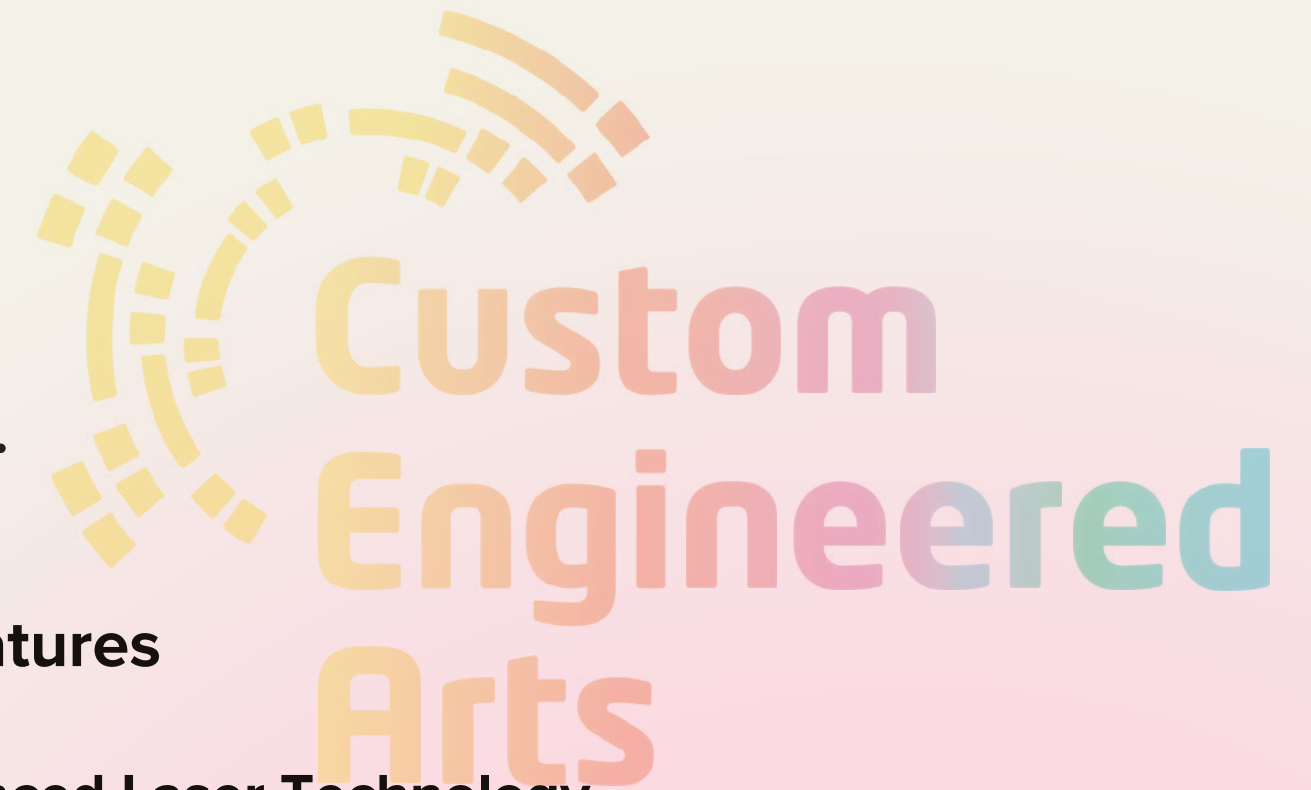
- ✓ High-Resolution Printing
- ✓ Versatile Media Handling
- ✓ Fast Throughput



Thunder Laser

Precision Cutting & Engraving Solutions

Thunder Laser is a leading provider of **high-precision laser cutting and engraving systems**, delivering **efficiency, reliability, and versatility** for both **industrial and creative applications**.



Key Features

✓ **Advanced Laser Technology**

Delivers fast, clean, and accurate cuts;

✓ **Versatile Applications**

Cuts and engraves **metal, wood, acrylic, and more.**

Applications

- **Increased Productivity**

High-speed cutting reduces lead times and boosts efficiency;

- **Enhanced Quality**

Clean, precise cuts with minimal post-processing

- **Ideal for**

Manufacturing, signage, automotive, and custom design projects.

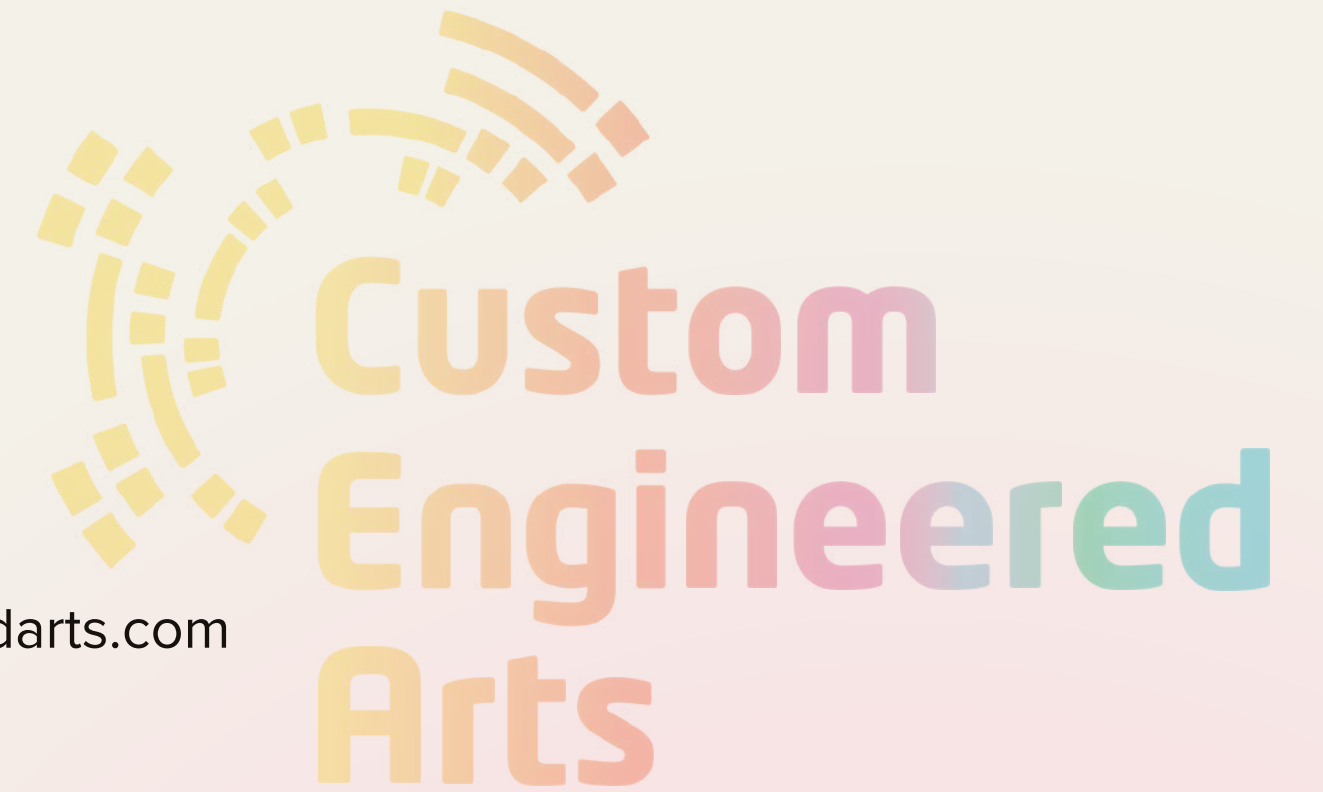
Projects



Projects



Contacts



Website

customengineeredarts.com

Phone

1 (888) 332-8762

E-mail

info@customengineeredarts.com



[@customengineeredarts](https://www.instagram.com/customengineeredarts)



[@customengineeredarts](https://www.facebook.com/customengineeredarts)



[custom-engineered-arts](https://www.linkedin.com/company/custom-engineered-arts)



[@customengineeredarts](https://www.youtube.com/@customengineeredarts)



[@customengineeredarts](https://www.youtube.com/@customengineeredarts)